

## TO EAT

### . LAS LILAS BURGER

With lettuce, tomato, Emmental cheese and french fries.

\$21.725\* \$27.500

### . KIDS FILLET

With soufflé potatoes or mashed potatoes.

\$24.885\* \$31.500

### . BREADED

Tenderloin with french fries or mashed potatoes.

\$23.700\* \$30.000

### . PENNE RIGATE

With fileto sauce, white sauce or butter.

\$20.540\* \$26.000



## TO DRINK

### . BEVERAGES

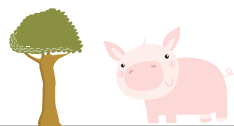
\$4.740\* \$6.000

### . WATER

\$4.740\* \$6.000

### . JUICES

\$6.320\* \$8.000



## DESSERT

### . ICE-CREAM

Chocolate or Dulce de Leche.

\$3.555\* \$4.500

### . CREPES

Filled with Dulce de Leche with vanilla ice-cream.

\$7.110\* \$9.000

### . FRUIT SALAD

\$5.925\* \$7.500

\*Price without national taxes

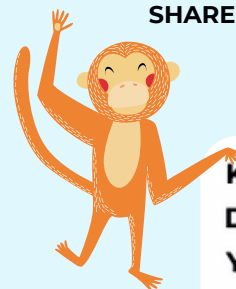
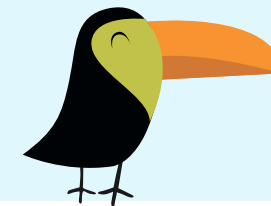


## ALPHABET SOUP

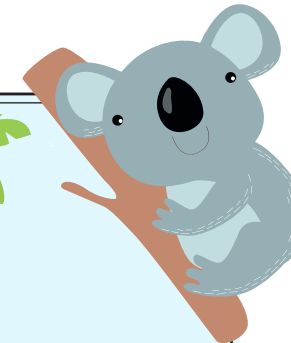
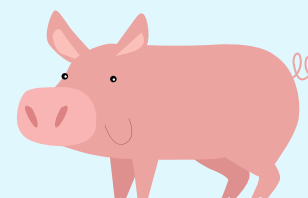
Discover the hidden words!

LAS LILAS  
CREPE  
PIG  
SHARE

COW  
FAMILY  
PLAY  
STEAK

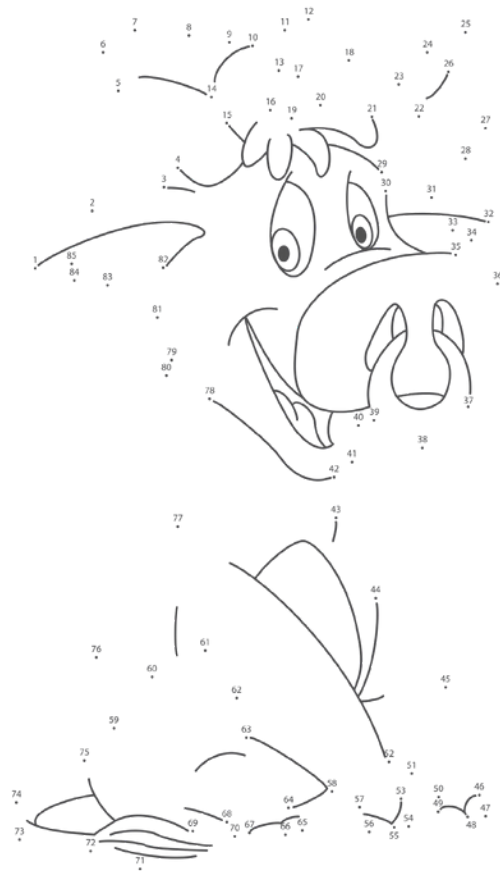


K T J R E R F Y N W O E Y X  
D S T E A K B X E L K B E C  
Y E L E O X G M Y X G S S P  
L A S L I L A S S C V J G A  
P F A Q G G H G F A M I L Y  
F Z X E G B M B O O P K M R  
N H Q U W D Q I P I K Q X J  
Z Y Q R Y S T D P I G H U Q  
E H N F M Y D C W N B W O B  
Z R J C B Y Z E N W N L W W  
V E K O I Q K E O Y Y L N C  
C O W C S L Z C C R E P E B  
J Q G F S H A R E J J Y H R  
T P L A Y A W W F O R N V O



## CONNECT THE DOTS!

Connect the dots according to the numbering.



## COLOR!

Choose the best colors to color our farm.

